

Abbott PanBio at-home rapid antigen test for COVID-19

Note:

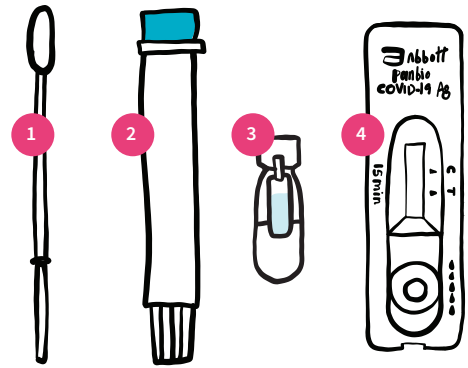
It is important to follow the instructions carefully for accurate results.

Your testing kit contains:

1. nose swab
2. empty tube
3. bottle of liquid
4. test unit

You will need:

- ✓ clean, level surface
- ✓ paper towel
- ✓ hand sanitizer
- ✓ timer or clock



Adapted from Abbott PanBio product insert — Updated Jan. 12, 2022

Before you start:

- ✓ Clean your hands.
- ✓ Place paper towel on a clean, level surface.
- ✓ Open the contents of your testing kit.
- ✓ Remove the test unit from the wrapper.
- ✓ Write your name with marker or pencil on the unit if testing more than one person.



Scan this QR code for an instructional video:
testtoprotect.ca/panbio

1

Remove **BLUE** cap from the tube.
Twist the top off the bottle of liquid.
Squeeze liquid into the tube until it reaches the line.

2

Put the swab into your nostril about 2cm (for small children, just put the swab into the nostril).
Rub and rotate the swab 5 times around and repeat for the other nostril (your eyes may water).

3

Gently lower swab into the liquid, stirring up and down for 10 seconds.
Pinch tube around swab to squeeze out remaining liquid.

4

Find the break line on the swab handle and snap the swab here.
Replace the **BLUE** cap, with the swab remaining inside of the tube.

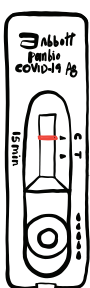
5

Twist off the **WHITE** dropper cap from the bottom of the tube.
Gently squeeze 5 drops into the round well of the test unit.
Let the sample move across the white strip.
Leave unit on level surface for 15 minutes.

6

When finished, put testing supplies in the garbage, sanitize your hands, and clean your testing space.

RESULTS (AFTER 15 MINUTES)

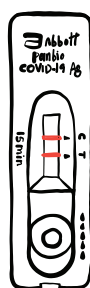


NEGATIVE — ONE LINE

one line at the C (control) mark,
no line at the T (test) mark

Please note:

- ✓ A single negative result cannot be used to rule out COVID-19 in a person with symptoms.
- ✓ Stay at home if sick and repeat the test in 48 hours.



POSITIVE

one line at the C (control) mark,
one line at the T (test) mark

You must:

- ✓ Isolate immediately.
- ✓ To notify Public Health of your positive test result, please complete the *Report and Support* screening questionnaire at c19hc.nshealth.ca/self-report.
- ✓ If you test positive using a rapid test, you need to consider yourself as having COVID-19, assume you are contagious, and you and your household must self-isolate. You also need to inform your close contacts.
- ✓ Visit nshealth.ca/testedpositiveforcovid to get more information on what to do.



INVALID — If your test does not match either the negative or positive examples, the test should be repeated with a new kit.

Keep testing kit out of reach of children and pets. Do not drink test fluid.